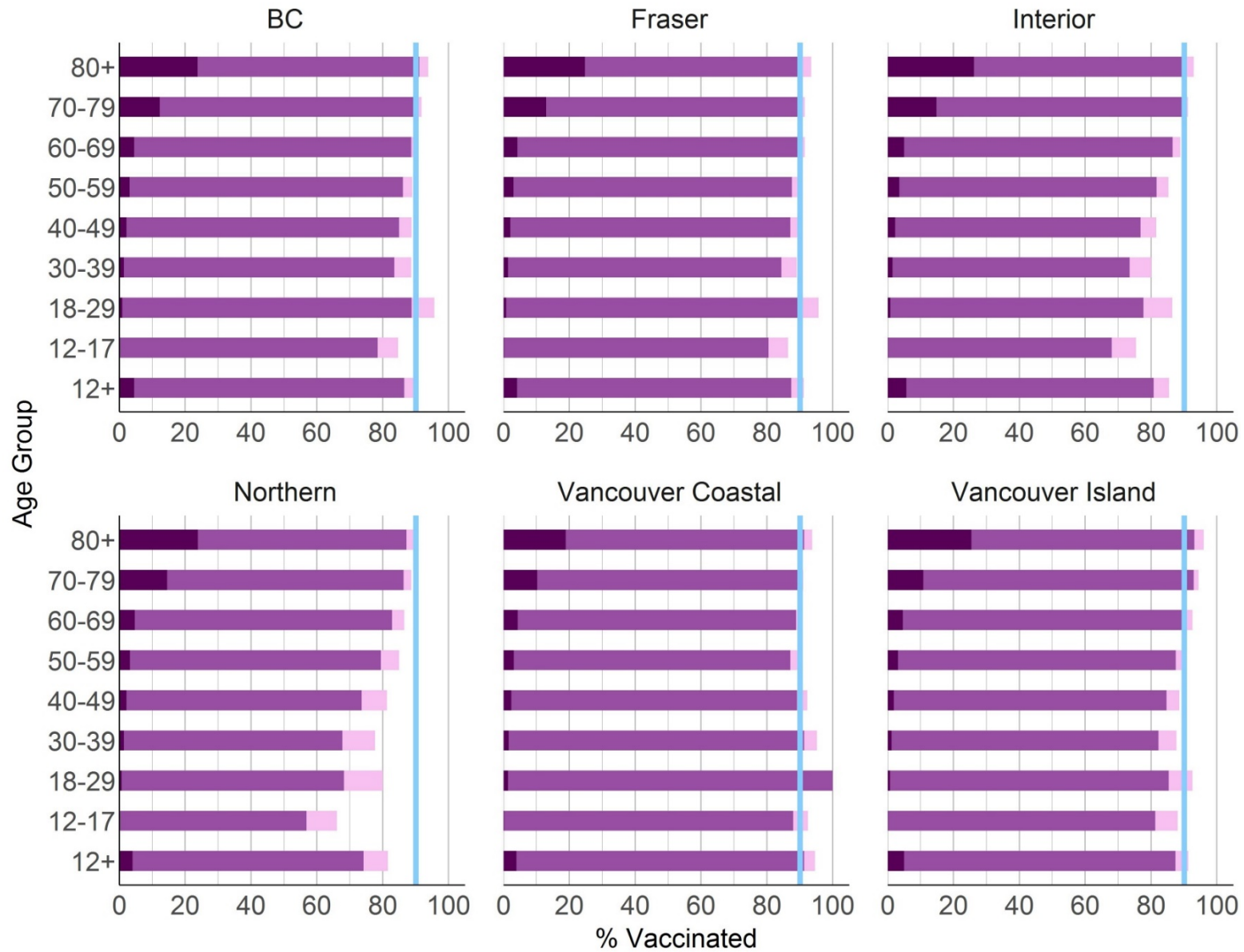


Dr. Reka Gustafson

VP Public Health and Deputy Provincial Health Officer



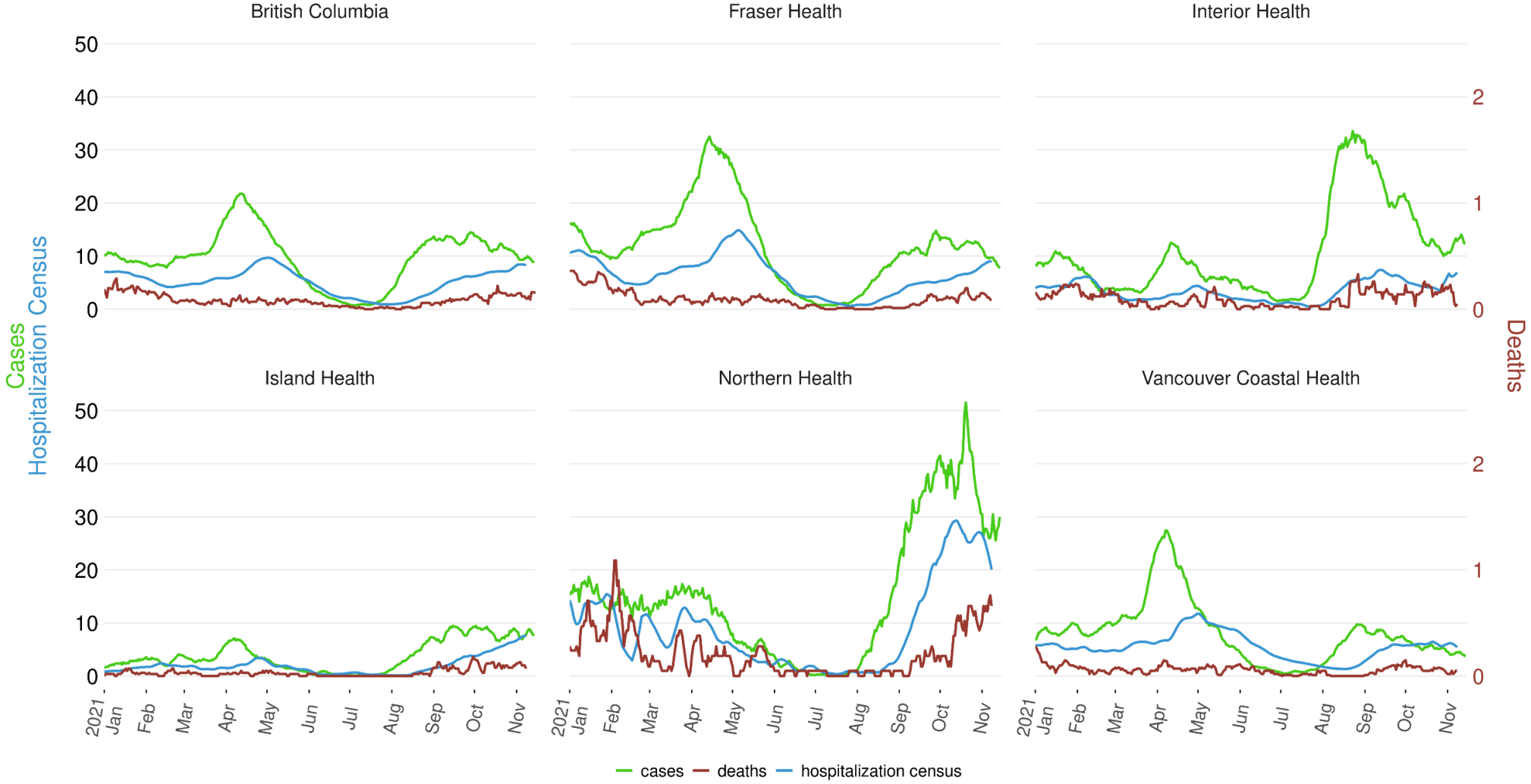
One dose Two doses Three doses



Blue line is for visual reference only

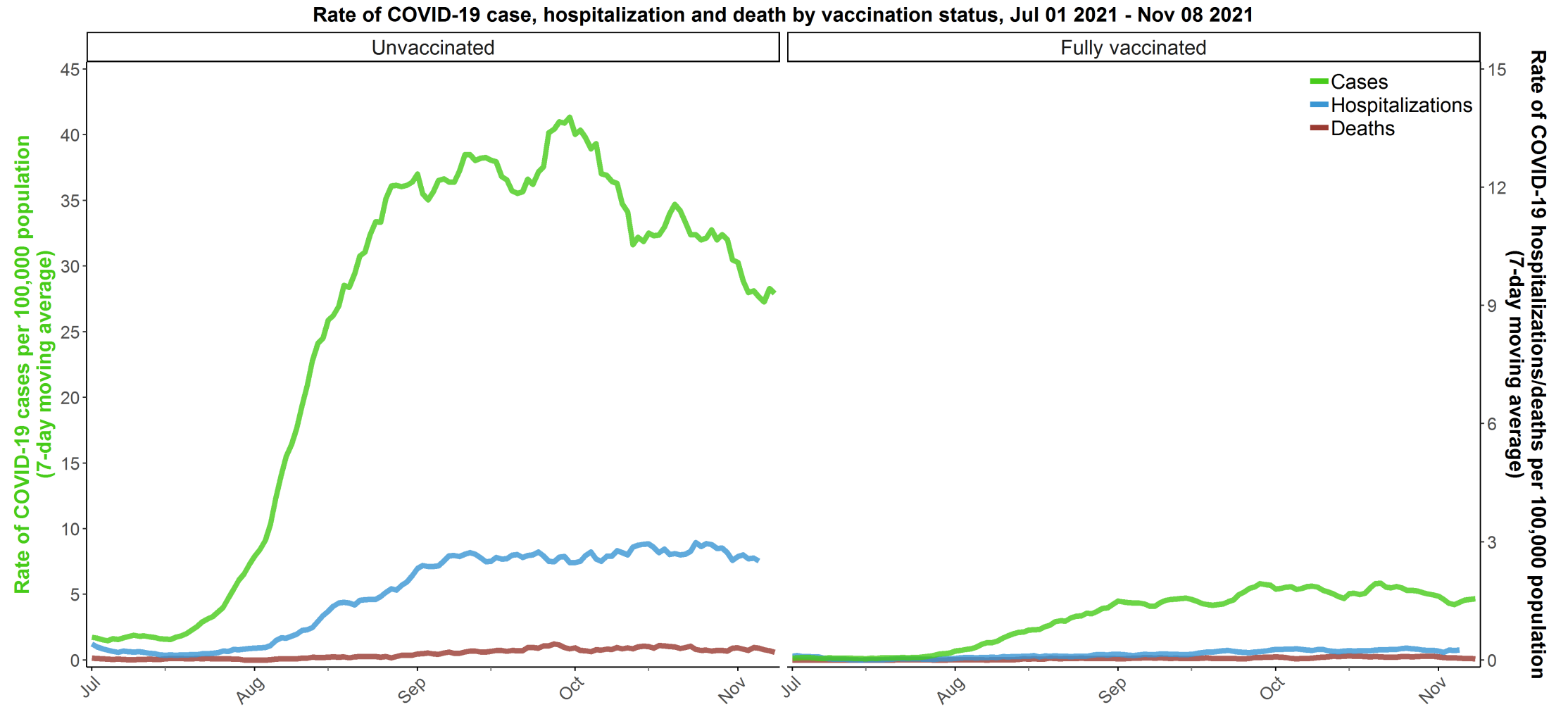
Data updated 2021-11-12
Data Source: Ministry of Health

New daily rates per 100K population (7-day moving average)

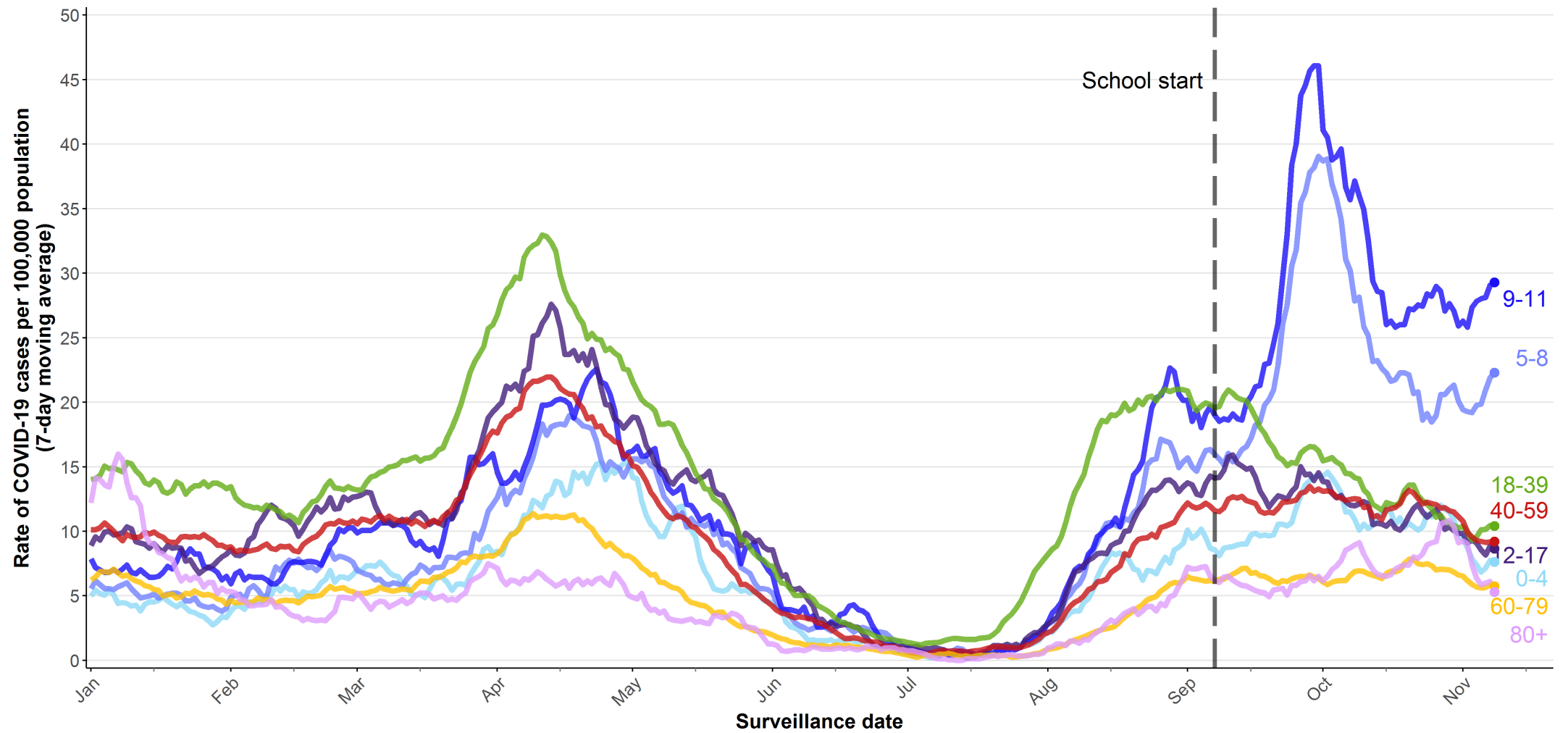


Data up to 2021-11-15

The majority of new cases and hospitalizations continue to be among unvaccinated individuals



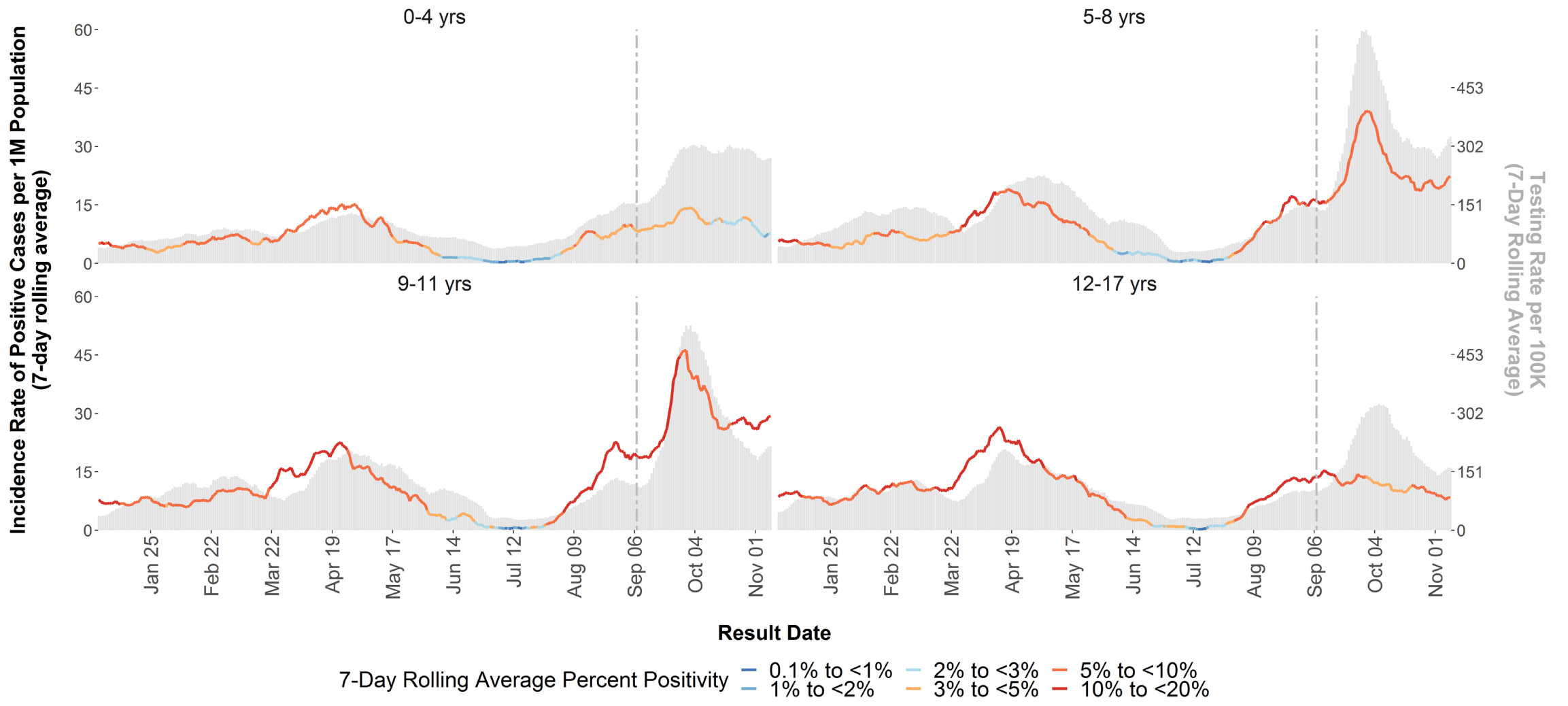
* Data are by surveillance date for cases and deaths, and admission date for hospitalizations
Data source: PHRDW Nov-09-2021



* Data based on surveillance date (i.e. lab result date, or when not available, date reported to public health)
Data range: Jan 01 2021 - Nov 08 2021



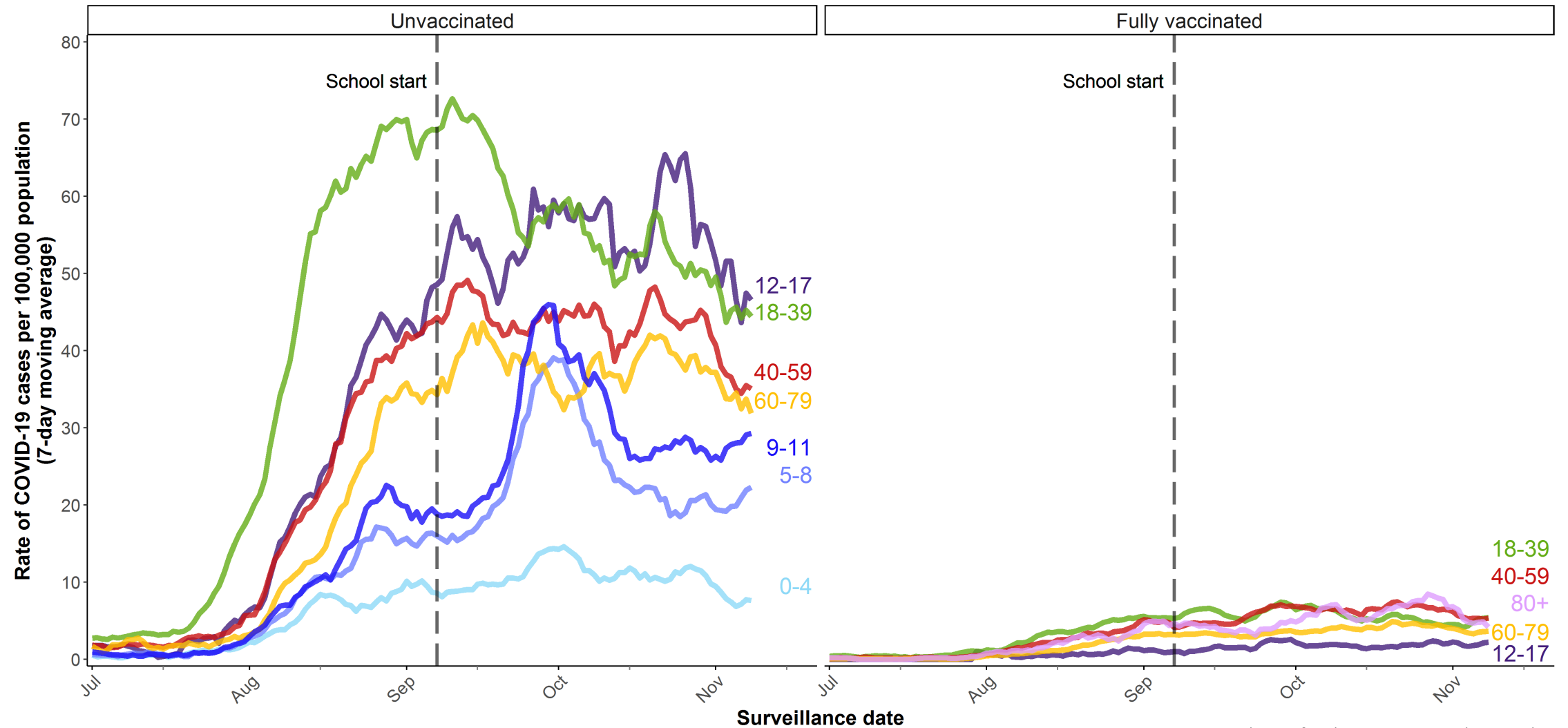
Case incidence rate, test percent positivity, and testing rate by age (Public Payers Only). Jan 1 2020 - Nov 8, 2021.



Data source: PLOVER 08-Nov-2021



For all age groups 12+, those who are vaccinated have very low case rates. Among those unvaccinated, case rates are lowest among children.

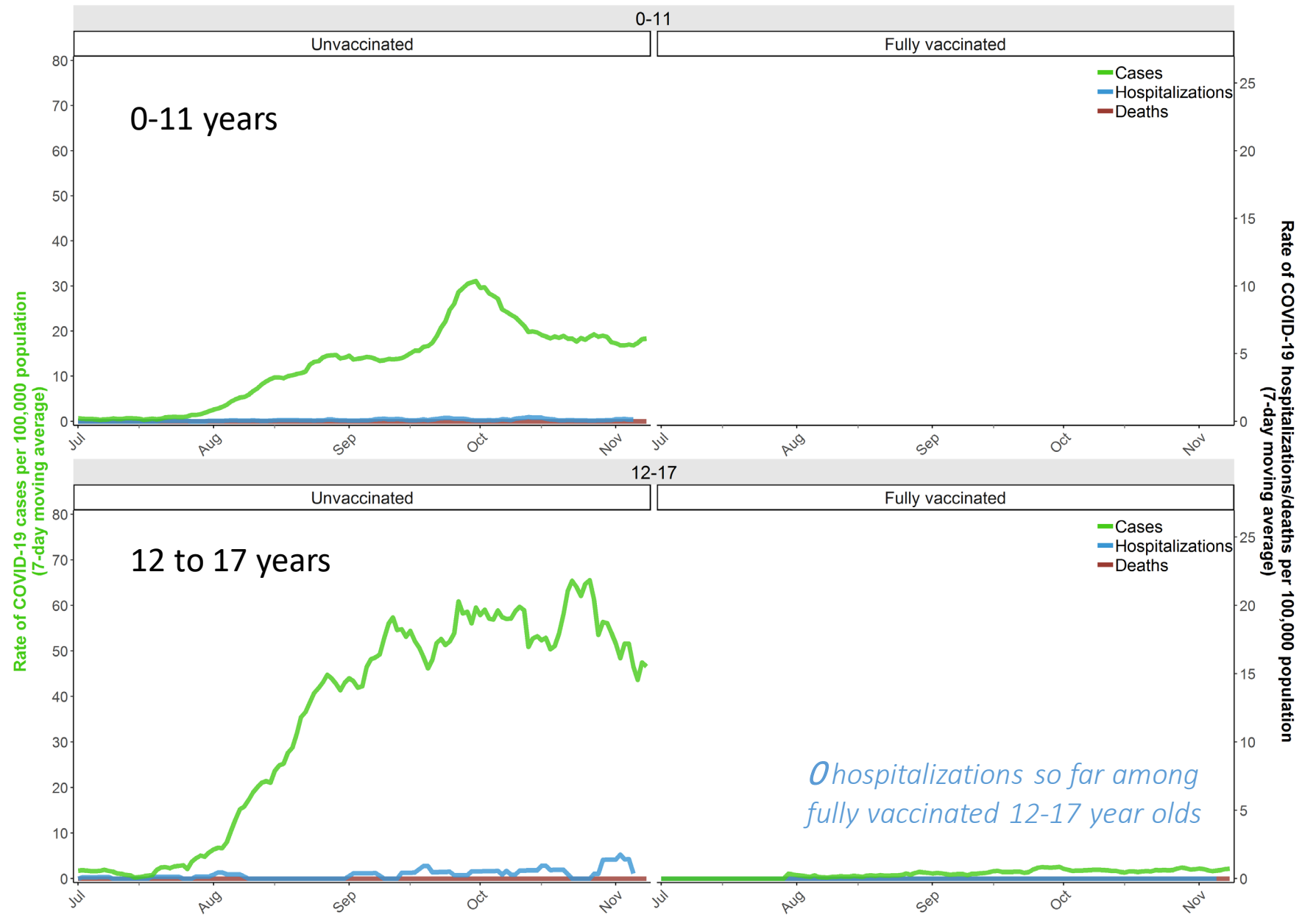


* Data based on surveillance date (i.e. lab result date, or when not available, date reported to public health)
Date range: Jul 01 2021 - Nov 08 2021

NB: 80+ age group not shown for the unvaccinated group due to high and very unstable rates, reflecting a small denominator

Case rates are relatively stable among children and youth.

Hospitalization rates remain low.



* Data are by surveillance date for cases and deaths, and admission date for hospitalizations
Data source: PHRDW Nov-09-2021

0 hospitalizations so far among fully vaccinated 12-17 year olds