

COVID-19 Public Health Webinar Epidemiology Update

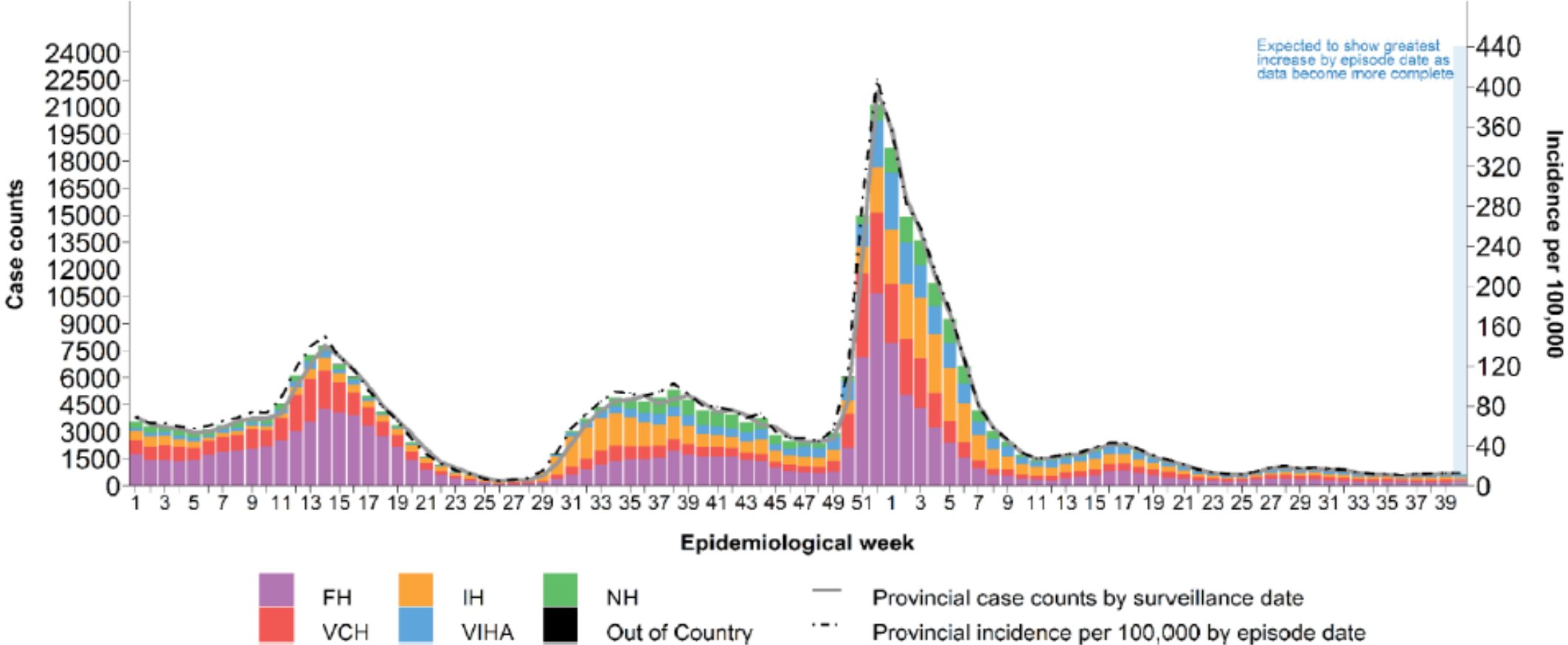
Mark Lysyshyn MD MPH FRCPC
Deputy Chief Medical Health Officer
Vancouver Coastal Health

Community Visits for Respiratory Illness



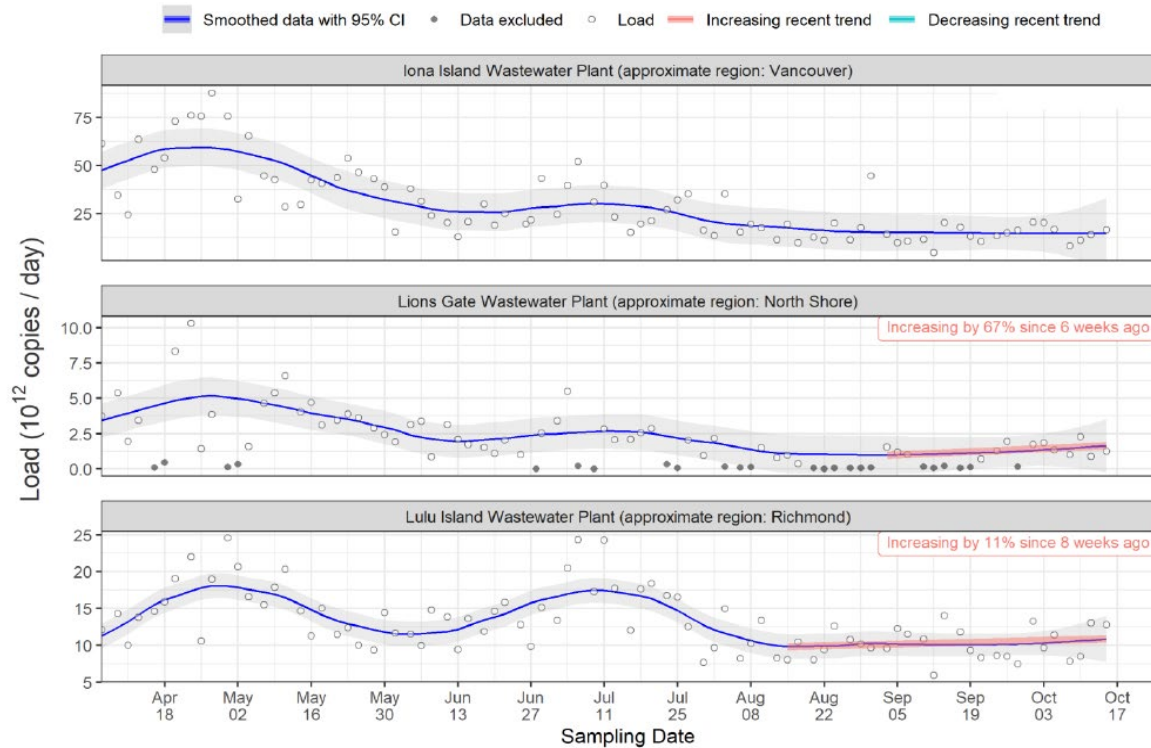
Data source: Unadjudicated MSP data, Adjudicated MSP data, Client Roster. Symptom-groups based on ICD-9 codes
Note: Numbers in the light purple area are more likely to change after adjudication.

COVID-19 Cases

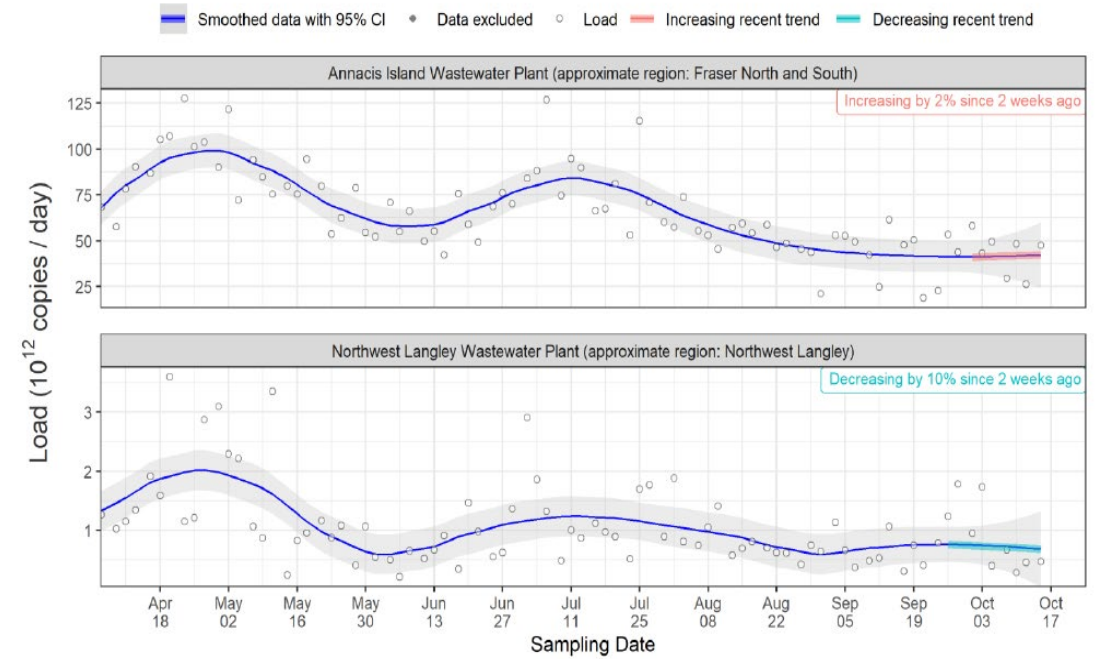


COVID-19 Wastewater Surveillance

VCH Sites

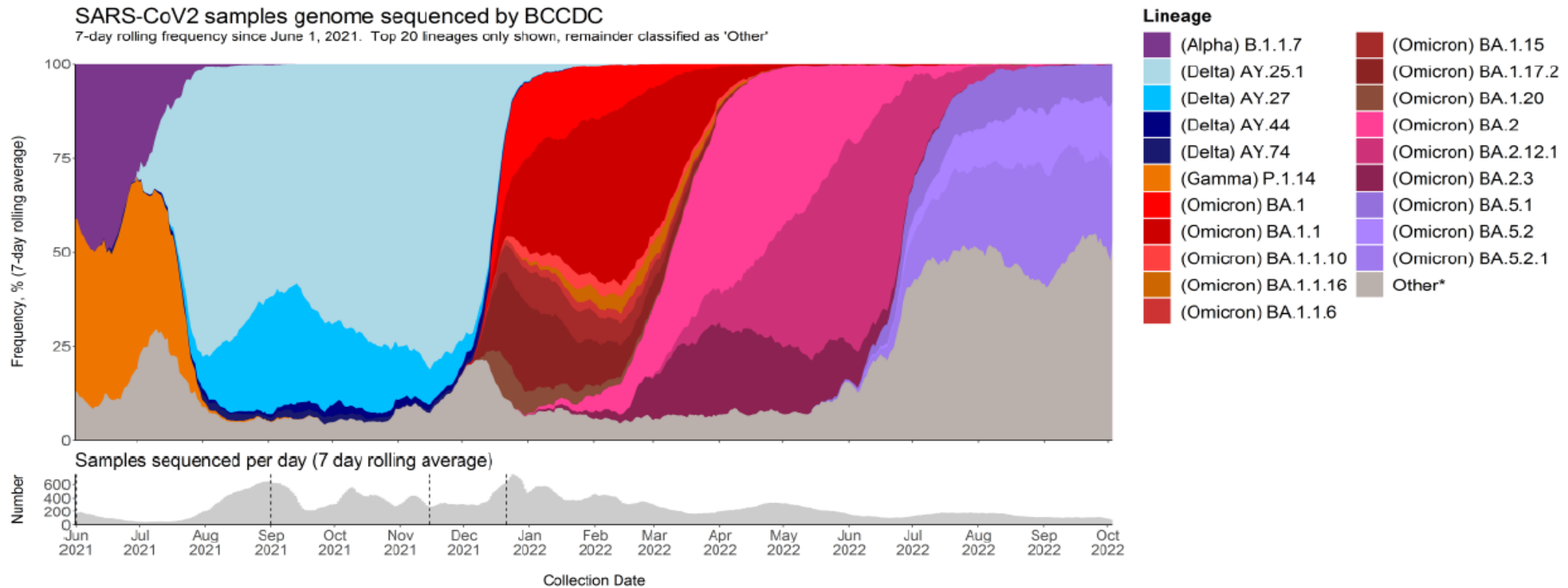


Fraser Health Sites



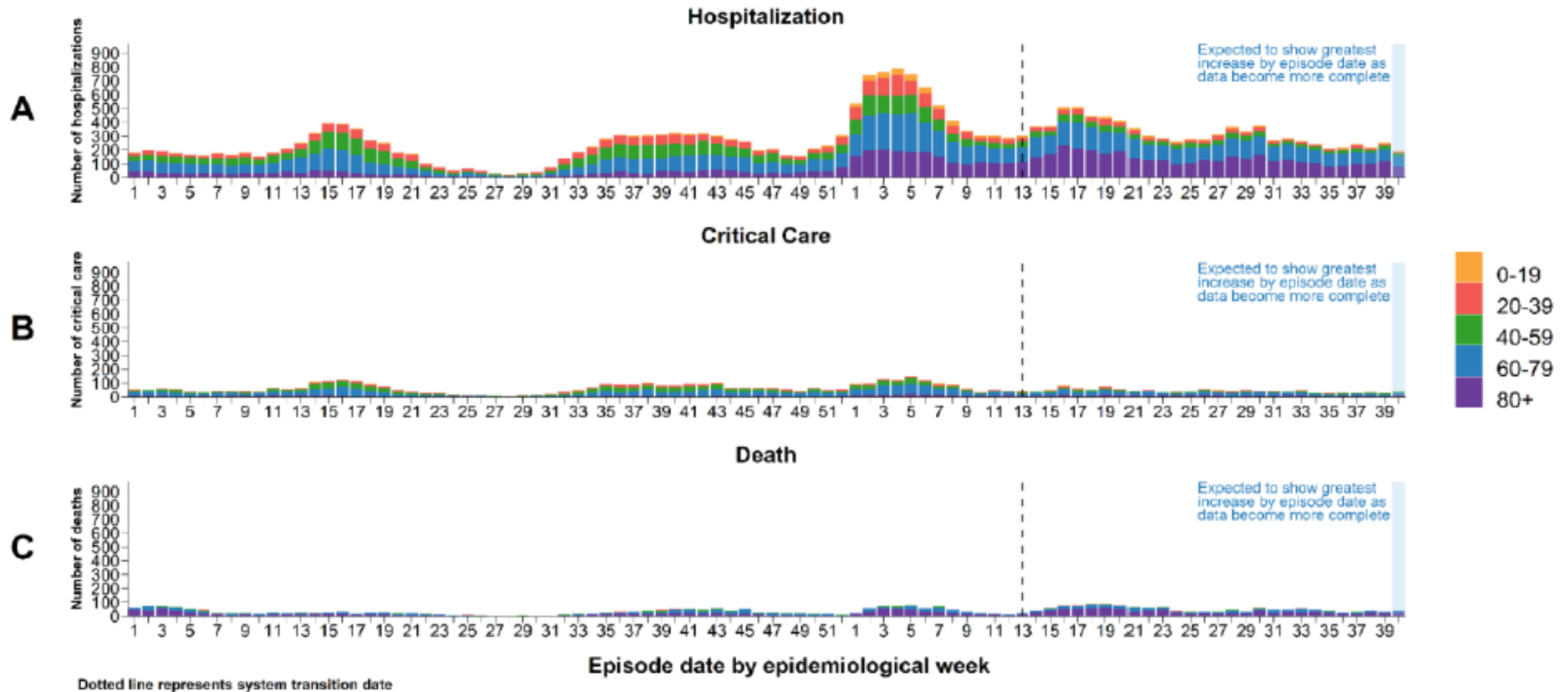
Circulating COVID-19 Variants

Figure 1. Twenty most prevalent lineages in British Columbia, June 1, 2021 - October 01, 2022**



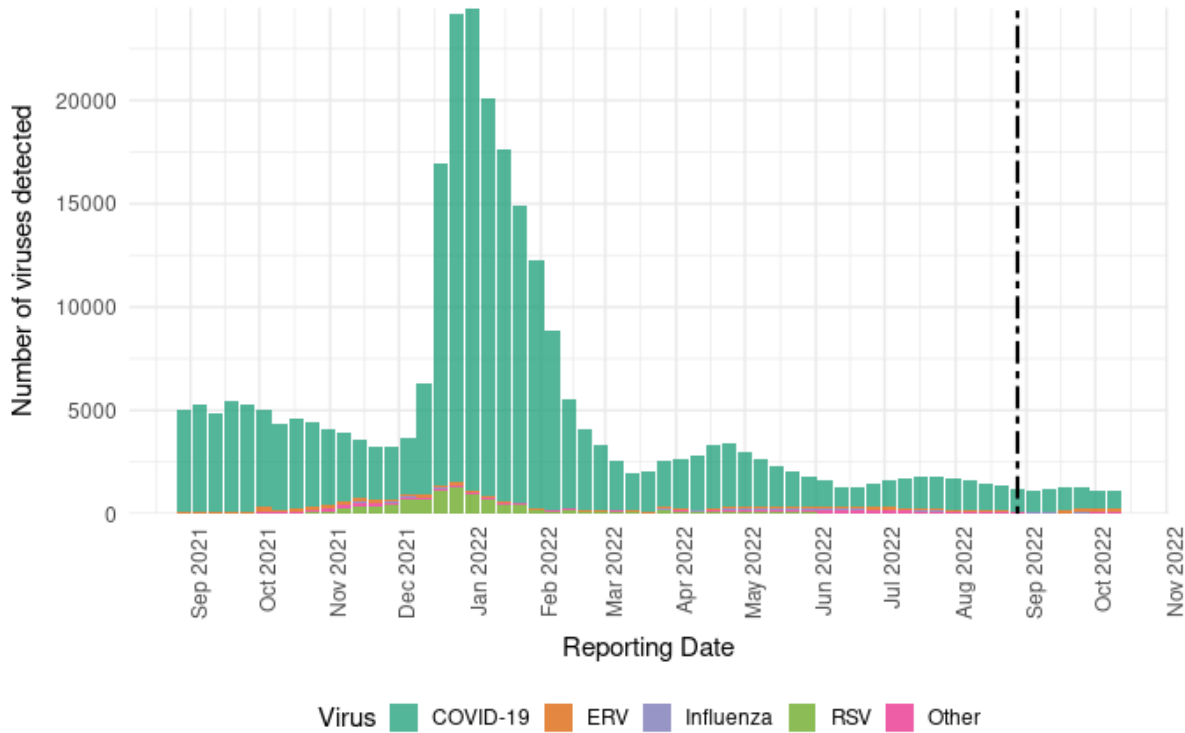
*Other includes: BA.4.1, BA.4.1.8, BA.4.6, BA.4.6.1, BA.5, BA.5.1.1, BA.5.1.10, BA.5.1.2, BA.5.1.20, BA.5.1.22, BA.5.1.23, BA.5.1.25, BA.5.1.27, BA.5.1.7, BA.5.10, BA.5.2.12, BA.5.2.13, BA.5.2.14, BA.5.2.18, BA.5.2.2, BA.5.2.20, BA.5.2.21, BA.5.2.22, BA.5.2.27, BA.5.2.3, BA.5.2.33, BA.5.2.6, BA.5. Pangolin version: 4.1.3, Usher version: 1.15.1, Pango version: 1.15.1. Total Pango assignments: 55 456; Total Usher assignments: 73 793

COVID-19 Hospitalisations and Deaths



Respiratory Virus Detections

Count of respiratory viruses since 2021-2022 Season, in BC

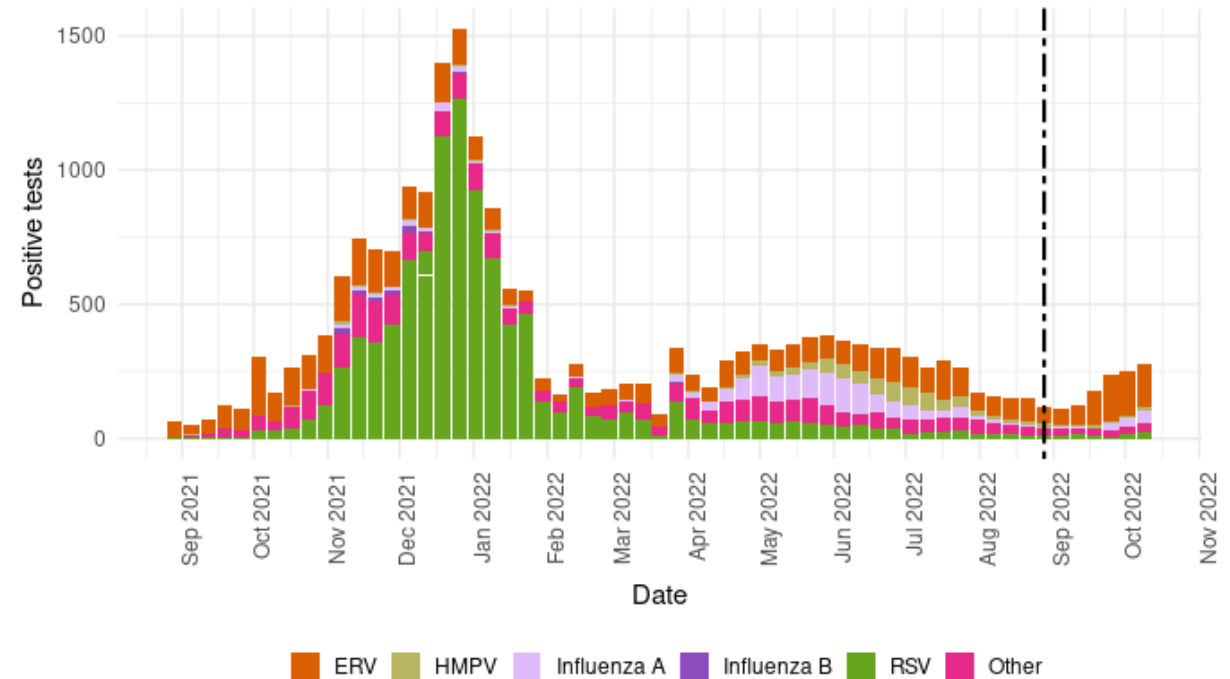


■ COVID-19
 ■ ERV
 ■ Influenza
 ■ RSV
 ■ Other

Histogram represents positive samples detected per epi-week
"Other" includes parainfluenza, adenovirus, human metapneumovirus (HMPV), and seasonal coronaviruses
Dashed line indicates the end of 2021-2022 Flu Season

Positive tests of influenza, and non-influenza respiratory viruses (NIRV) in BC during 2021-2022 season

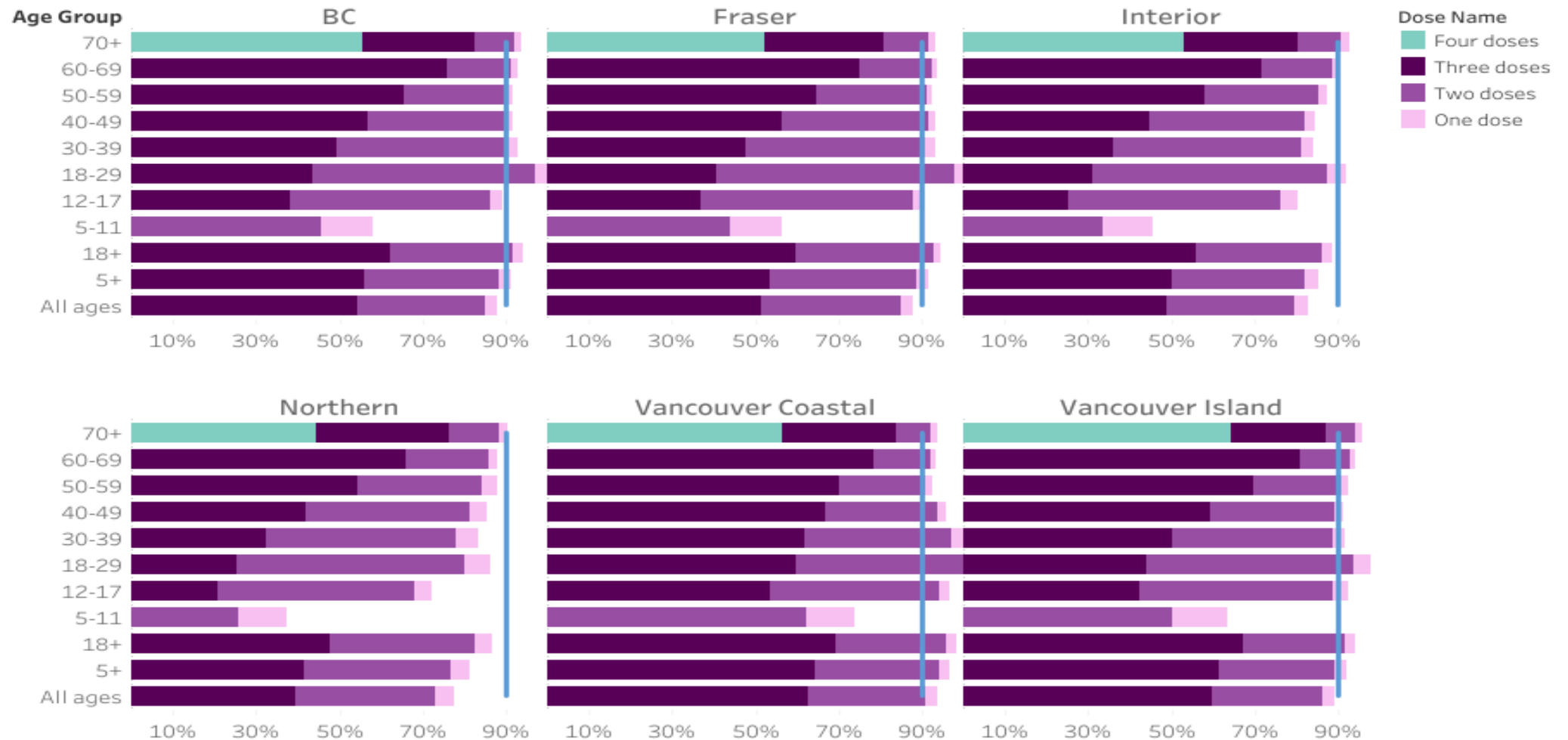
Other viruses include parainfluenza, coronaviruses and adenovirus



Dashed line indicates the end of 2021-2022 Flu Season

COVID-19 Immunization Coverage

Vaccination Coverage Progress in BC by age and by Health Authority, 31 Jul. 2022



COVID-19 Population Immunity

Most of the population have accrued some immunity to SARS-CoV-2 from vaccination or infection.

