

# Welcome

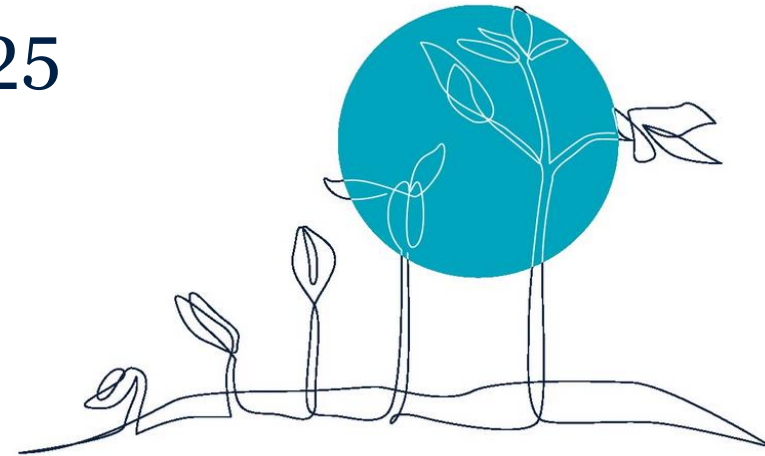
Session starts at 8:30AM

Welcome, Introductions and PRA-BC Program Overview

# Welcome & Introductions

Centralized Orientation – Spring 2025

April 6, 2025



# Land Acknowledgement

We are on the unceded homelands of the Indigenous People of Canada, and here in Vancouver, we are on the traditional territories of the Coast Salish People, including the Skwxwú7mesh (Squamish), xʷməθkwəy̓əm (Musqueam), and Səlílwətaʔ/Selilwitulh (Tsleil-Waututh) Nations.



Source: Beadwork by Amanda Laliberte, Ashley Copage, Ashley McKenzie-Dion, Didi Grandjambe, Jennelle Doyle, Joelle Charlie, Kyla Woodward, Lenore Augustine, Marissa Magneson, Mellz Compton, Monique Jolly, and Rena Laboucan. Graphic design by Justin Romero. (Kooten Creations/Facebook)

# Conflict of Interest Disclosure

Dr. Anas Toweir has no conflicts to declare

- Associate Clinical Director, PRA-BC
- Employee of PRA-BC

Dr. Nerine Kleinhans has no conflicts to declare

- Associate Clinical Director, PRA-BC
- Employee of PRA-BC

Mary Chinni has no conflicts to declare

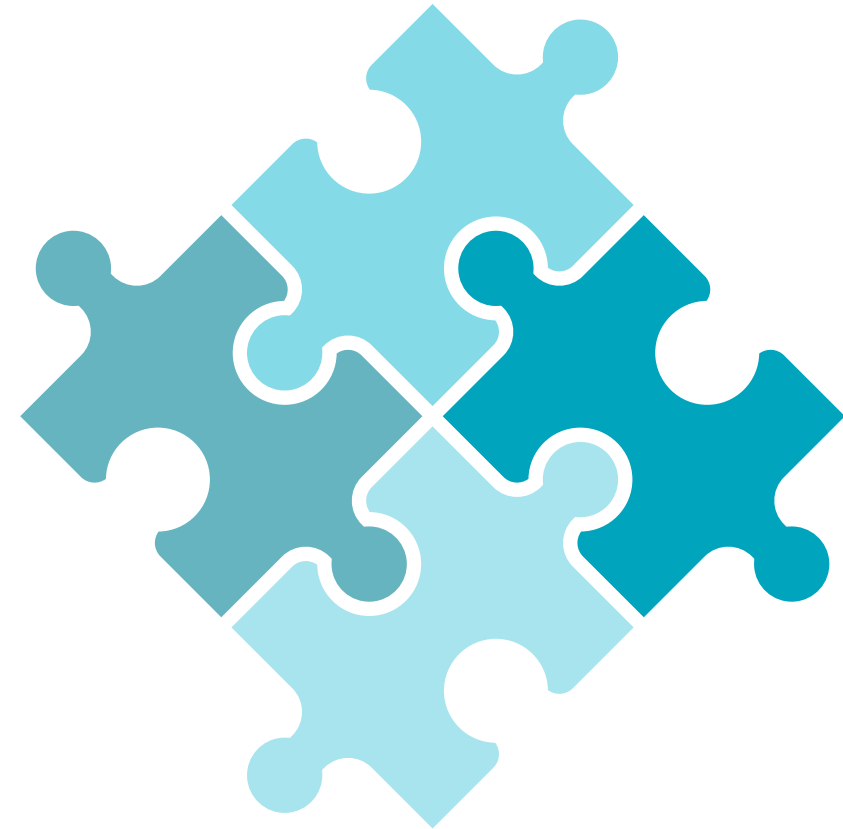
- Program Manager, PRA-BC
- Employee of PRA-BC

Dr. Steven Yau has no conflicts to declare

- Physician at VCH
- Medical Director – UBC CPD IMG Programs
- Contractor to UBC CPD

# Acknowledgements

- PRA-BC Steering Committee:
  - Ministry of Health (MoH)
  - Joint Standing Committee on Rural Issues (JSC)
  - Health Authorities
  - College of Physicians & Surgeons of BC (CPSBC)
  - Health Match BC
- PRA-BC Team
- UBC CPD Team
- Clinical Field Assessors



# PRA-BC Team

Dr. Anas Toweir

Associate Clinical Director  
AnasT@prabc.ca

Dr. Nerine Kleinhans

Associate Clinical Director  
NerineK@prabc.ca

Mary Chinni

Program Manager  
MaryC@prabc.ca

Amanjot Bhandol

Intake and Assessment Lead  
AmanjotB@prabc.ca

Dr. Ryan McCallum

Clinical Consultant  
RyanMc@prabc.ca

# UBC CPD Team

Dr. Steven Yau

Medical Director, IMG Programs  
Steven.Yau@ubc.ca

Charlotte Humphries

Program Manager  
Charlotte.H@ubc.ca

Luke Wu

Program Coordinator  
Luke.W@ubc.ca

Madison Estrella

Events Assistant  
Madison.E@ubc.ca

Elena Chuang

Program Assistant  
Elena.C@ubc.ca

# Learning Objectives

**By the end of this session, participants will be able to:**

- Identify the structure of the PRA-BC programs and identify key personnel
- Access online resources available to support Centralized Orientation success
- Identify the goals and objectives of the Clinical Field Assessment (CFA) and Orientation for PRA-BC candidates

# Let's Get to Know YOU!

- Partner with a candidate
- Take **two (2) minutes each** to learn about the other person
- **Introduce your partner** and share with the group his/her:
  - Name
  - Home country and time in Canada
  - Number of years in practice as a physician
  - One interesting or “little known” fact (non-medical)





# PRA-BC Housekeeping

Centralized Orientation- Spring 2025

Mary Chinni, PRA-BC

# PRA-BC Administration – Next Steps

## **Holiday Inn - Accommodations**

- Supported PRA-BC since 2015
- Be respectful!

## **Read Your Emails Carefully**

- You will receive many emails from partnering organizations (health authorities, the CPSBC, UBC CPD, PRA-BC...)
- Take the time to read them...take the time to respond to them

## **Canadian Medical Protection Association (CMPA)**

- CMPA Coverage Information Number REQUIRED
- Ensure you have provided Robyn Stick with this information

# PRA-BC Administration – Next Steps (continued)

## CFA Site Information

- Assessor contact info and introduction email
- Travel arrangements confirmed

## CFA Accommodations

- PRA-BC secures housing on your behalf
- Questions or concerns: [Contact PRA-BC](#)
- Be respectful!

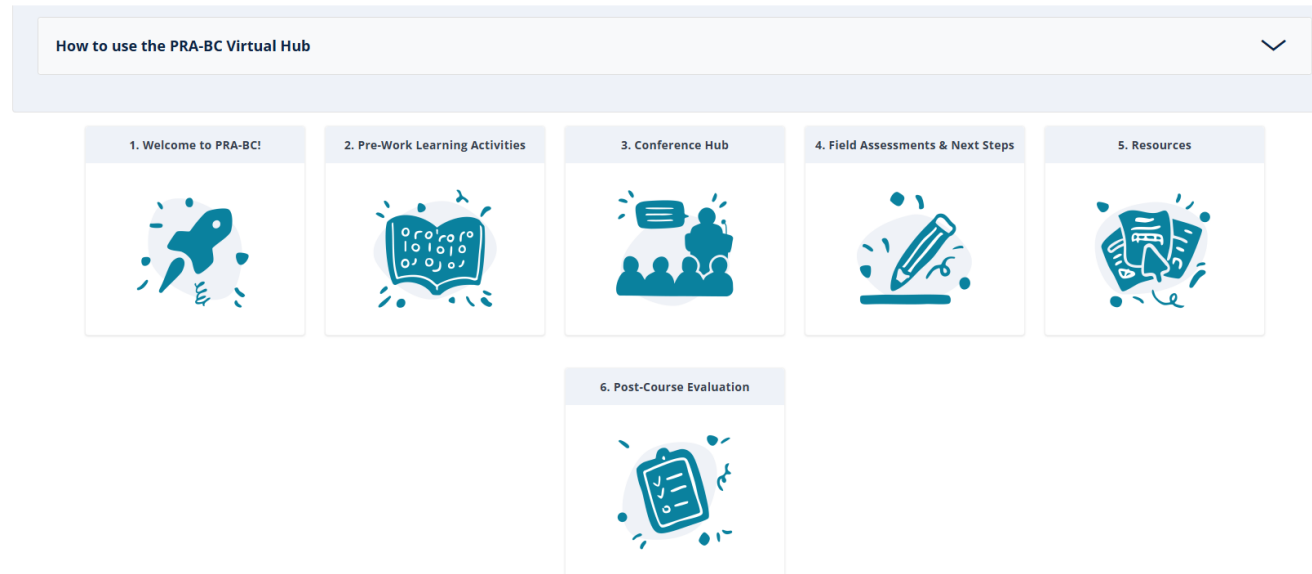
# eLearning

Centralized Orientation- Spring 2025

UBC CPD Staff

# eLearning: PRA-BC Virtual Hub

PRA-BC Virtual Hub: <https://elearning.ubccpd.ca/course/view.php?id=597>



**Please Note:** *We will be checking that people have completed the pre-work before the associated live session*

# Conference Hub

- **Pre-work** due date reminders
  - **Agenda** for each day of the CO
  - **Speaker contacts**
- 
- **Evaluation Survey** (to be completed at EoD)
  - **Slides and resources** will be uploaded to the Virtual Hub at the end of each day

The screenshot displays the UBC CPD eLearning Conference Hub interface. At the top, the UBC CPD eLearning logo is on the left, and navigation links (Home, Dashboard, Site administration, Help, Main Site) are on the right. Below the logo, there are tabs for Course, Participants, and Question bank. The main content area is titled '3. Conference Hub' and includes a date selector for 'Sun, April 6' through 'Fri, April 11'. A purple box contains a list of tasks to complete before Sunday, April 6, including 'Welcome to PRA-BCI Lessons', 'Landscape of Health Care in BC and Canada', 'Mental Health', and 'Field Assessments & Next Steps Lessons'. Below this, the 'Agenda' section lists activities from 08:00 to 16:15, such as 'Breakfast', 'Welcome to PRA-BC Orientation & Intro to CFA (Part 1)', 'Coffee Break', 'Culture, Communication and Feedback', 'Lunch', 'Mental Health', 'Coffee Break', 'Periodic & Preventative Care', 'Online Reporting Forms', and 'Wrap Up & Evaluation'. To the right of the agenda is a 'Speaker contacts' section listing speakers like Dr. Anas Towelr, Dr. Nerine Kleinbans, Dr. Steven Yau, Ms. Mary Chinni, Dr. Parastoo Ghanbari, Dr. Bruce Hobson, Dr. Brian Ng, and Amanjot Bhandol with their email addresses. At the bottom, there are two sections: 'Evaluation Survey' with a 'Go to Survey' button and 'Resources and Slides' with a 'Go to Resources' button. The footer includes a 'Jump to...' dropdown and navigation links for '2. Pre-Work Learning Activities' and '4. Field Assessments & Next Steps'.

# Post-Session Evaluations

- Evaluate the sessions delivered during the Centralized Orientation by using your camera to scan the QR codes provided at the end of the day.
- Links to the survey can also be found on the respective date of the Conference Hub (in the Virtual Hub).

# Thank you...

# Now let's get started!



# Program Overview

Centralized Orientation- Spring 2025

# PRA-BC Program Overview



**eLearning Reminder: More information on the other program components can be found in the Virtual Hub.**

# PRA-BC Program Overview

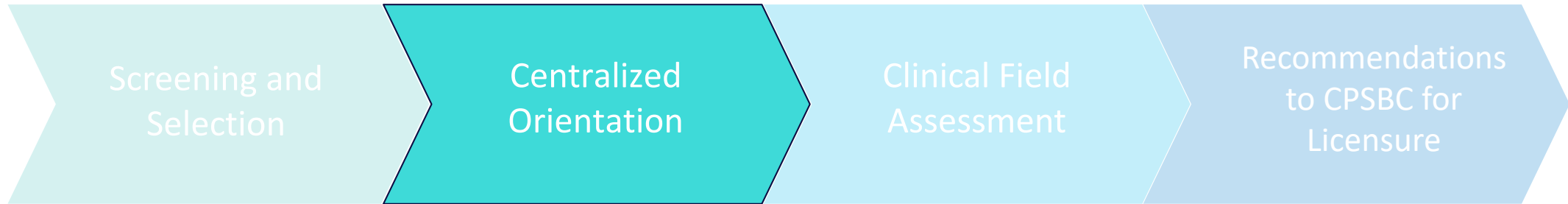
A workplace-based assessment program for practicing IMG Family Physicians:

- Two intakes per year and assesses up to 96 physicians annually.\*
- 12-week Clinical Field Assessment (CFA)
- Successful candidates will fulfill a three-year return of service (ROS) within a BC community.

*\*2022 announcement of growth by MoH*

## PRA-BC Overarching Goal

To deliver **competent**, committed internationally trained family physicians to underserved regions of rural and urban BC



**Goal:** To familiarize PRA-BC candidates with the requirements for the Clinical Field Assessment (CFA), and to help prepare them for the practice of family medicine in rural or urban BC.

- Delivered in partnership with UBC CPD
- 6-day in-person orientation in Vancouver with asynchronous learning, totalling ~70 hours
- Curriculum **not** intended for clinical (re)training, rather orientating new physicians to conduct medical visits in Canadian settings – policies, guidelines, cultural nuance, etc.

# eLearning Reminder

*Want to revisit some of this material?*

Further details on the PRA-BC program and the Clinical Field Assessment (CFA) can be found in the **PRA-BC Virtual Hub**.

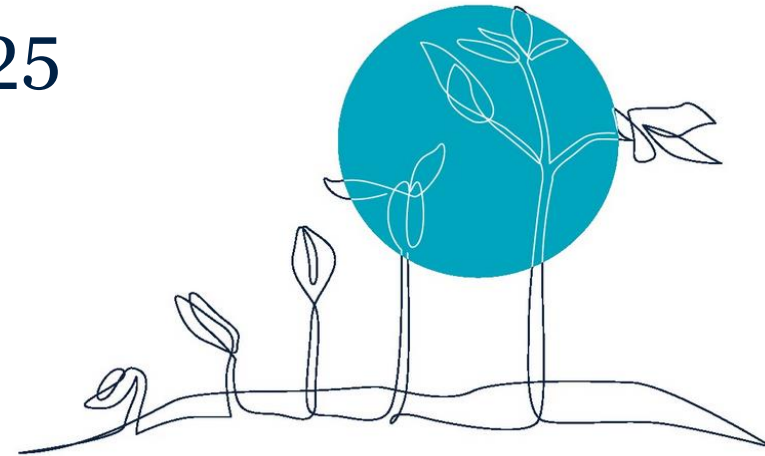


Visit our eLearning course at  
<https://elearning.ubccpd.ca/course/view.php?id=597>  
or scan the QR code.

# Intro to the CFA (Part 1)

Centralized Orientation – Spring 2025

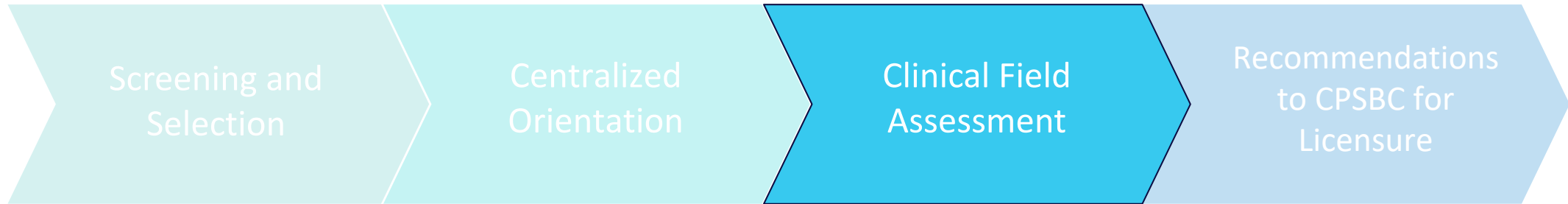
April 6, 2025



# Learning Objectives

**By the end of this session, participants will be able to:**

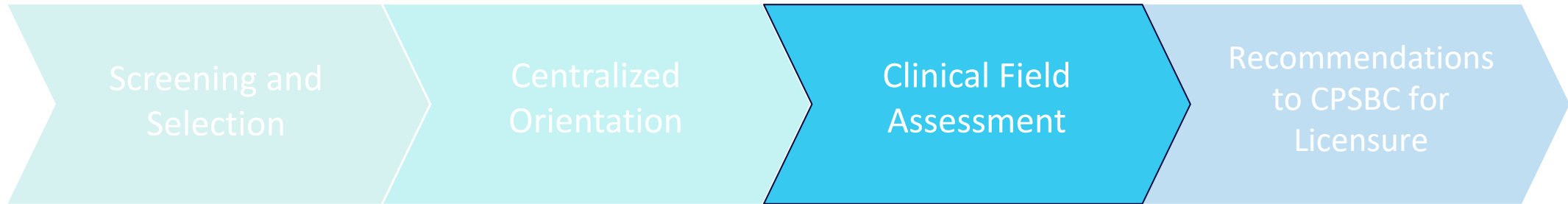
- Identify PRA-BC assessment principles
- Describe the scope of practice of the candidate during the clinical field assessment (CFA) period



## About the CFA

- The 12-week Clinical Field Assessment (CFA) period: **April 14 – July 4, 2025**
- **Comprehensive workplace-based summative assessment** of readiness for independent practice
- A candidate's CFA **WILL NOT** occur in the same community as their return-of-service (ROS) community (exceptions can be made in urban communities)
- Candidates are granted **Assessment Class** registration from the CPSBC
  - **Equivalent autonomy level of 4th year medical students**
  - **Required to be under continuous supervision at all times**
  - **Not registered/licensed as a Most Responsible Physician (MRP)**





## PRA-BC Candidates Scope of Practice

*At the discretion of the assessor, the candidate may:*

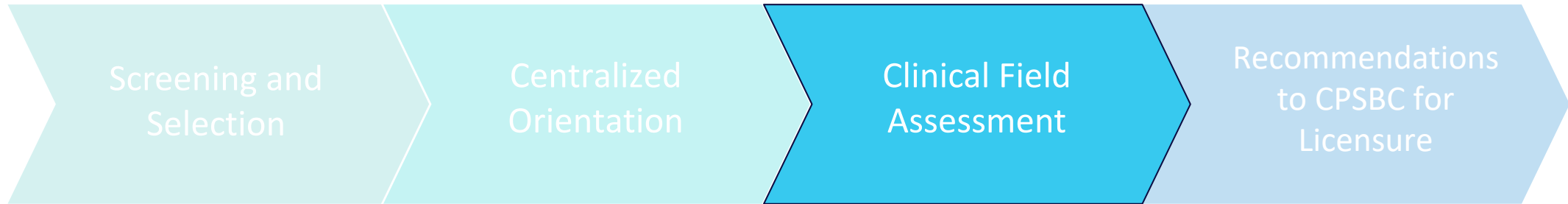
1. See patients independently in an office setting under supervision
2. Act as “First On-Call Physician” in the ER, hospital, residential care or urgent care settings
3. ALL of the above must be COUNTERSIGNED by the assessor or delegate in a timely fashion.
4. For evaluation and feedback purposes, assessors will review all clinical interactions with patients at the time of interaction

# In Summary

Candidates are expected to **perform** at the level of **graduating family medicine residents** (2<sup>nd</sup> year) about to enter independent practice

***BUT...***

Due to licensing restrictions, they have the **autonomy of 4th year medical students**



**More information on the CFA period will be provided to you on Friday, April 11<sup>th</sup>.**

In the meantime, feel free to review the 'Field Assessments & Next Steps' section of the PRA-BC Virtual Hub.



**eLearning Reminder: More information about the CFA period and scope of practice can be found in the Virtual Hub**

# Principles Behind PRA-BC

## 1. Framework and principles – aligned with NAC PRA-FM

*Over-time supervised workplace-based assessment program*

**2. Documentation** of candidate performance and skills will be measured against the following criteria:

### *Clinical Domains of Care*

The scope of care in Family Medicine.

### *Sentinel Habits*

Behaviours family physicians should demonstrate.

### *Assessment Objectives*

The essential skills and observable competencies that are expected (intended for residents at the end of their training)

# What does “Practice Ready” Mean?

You consistently demonstrate competence  
in each of the **8 Sentinel Habits** across the  
**8 Domains of Care** in the 12-week  
assessment period

*... and beyond*

# Sentinel Habits

*The various areas of family medicine that portray the scope of care in Family Medicine.*

## **The Eight Sentinel Habits:**

- 1) Incorporates the patient's experience and context into problem identification and management
- 2) Generates relevant hypotheses resulting in a safe and prioritized differential diagnosis
- 3) Selects and attends to the appropriate focus and priority in a situation
- 4) Manages patients using available best practices
- 5) Demonstrates respect and/or responsibility
- 6) Verbal or written communication is clear and timely
- 7) Uses generic key features when performing a procedure
- 8) Seeks out and responds appropriately to feedback



# Domains of Care

*The various areas of family medicine that portray the scope of care in Family Medicine.*

## Examples of Domains of Care:

- Maternity/newborn care
- Care of children and adolescents
- Care of adults
- Care of the elderly
- Palliative care
- Behavioural medicine & mental health
- Care of vulnerable and underserved
- Procedural skills



# Assessment Objectives

*The various areas of family medicine that portray the scope of care in Family Medicine.*

- Assessment Objectives are helpful for articulating and describing sentinel habits
- Assessment Objectives can be found on the [CFPC website](#).





# eLearning Reminder

Refer to the **Field Assessment & Next Steps** section of the Virtual Hub course to review the overview of the CFA discussed today, including assessment principles and scope of practice.



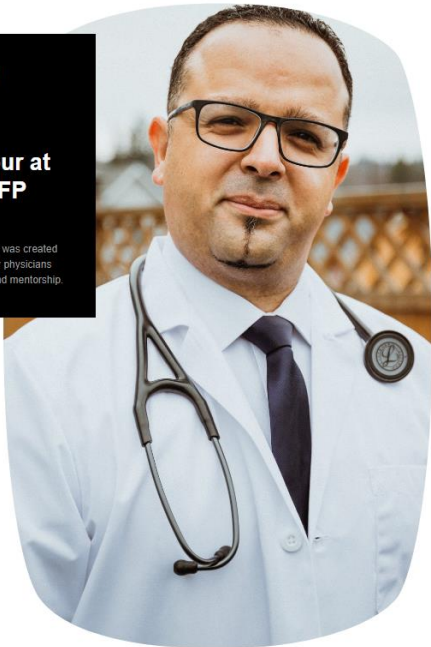
Visit our eLearning course at:  
<https://elearning.ubccpd.ca/course/view.php?id=597>  
or scan the QR code to the left.



# PRA-BC Successes

**PRA-BC Grad awarded the Exceptional Teacher Honour at the 2023 BCCFP Awards!**

The Exceptional Teacher Honour was created to recognize and celebrate family physicians who are dedicated to teaching and mentorship.



**Dr. Husni Abdalla joins Enderby's healthcare team**

Interior Health Authority celebrated the arrival of Dr. Husni Abdalla, an internationally trained family physician, to the Enderby Community Health Centre. Dr. Abdalla joins three other primary care providers and is expected to take on over 1,000 patients, addressing the province-wide doctor shortage.



**North Vancouver Island Health has welcomed two new physicians**

Dr. Ramiz Alhadi and Dr. Hadi Hmoud, having recently completed the Practice Ready Assessment program in BC, are currently working at the Port Hardy Primary Health Care. Both the doctors have a wealth of knowledge and experience, and have embraced the lifestyle in Port Hardy.

**Clearwater welcomes another Family Physician and E.R.-certified doctor**

Starting his journey in Nigeria, Dr. Stephen Ayosanmi is now a part of the beautiful community of Clearwater. Dr. Ayosanmi and his family love the warmth of the people and the scenic beauty that Clearwater has to offer.



## 319 PHYSICIANS IN 77 COMMUNITIES



# Thank You!