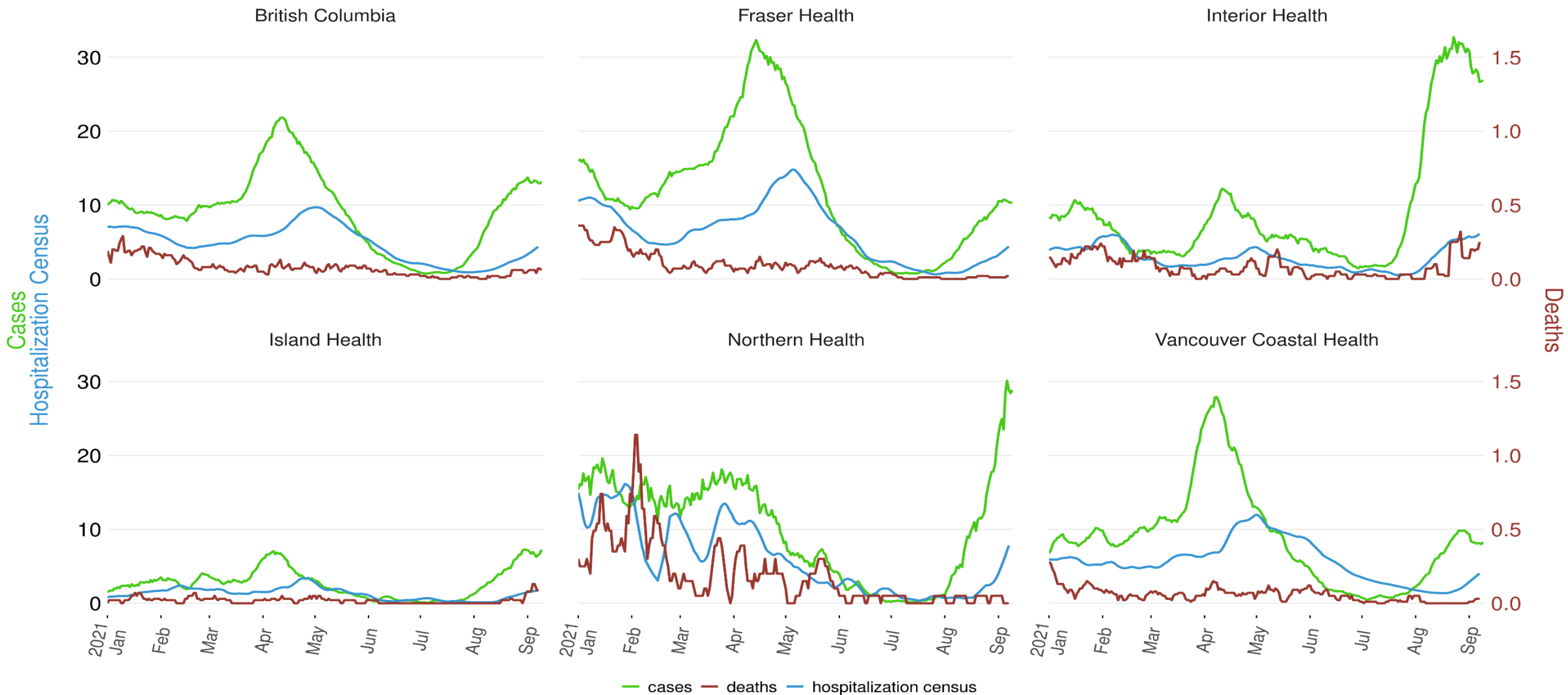
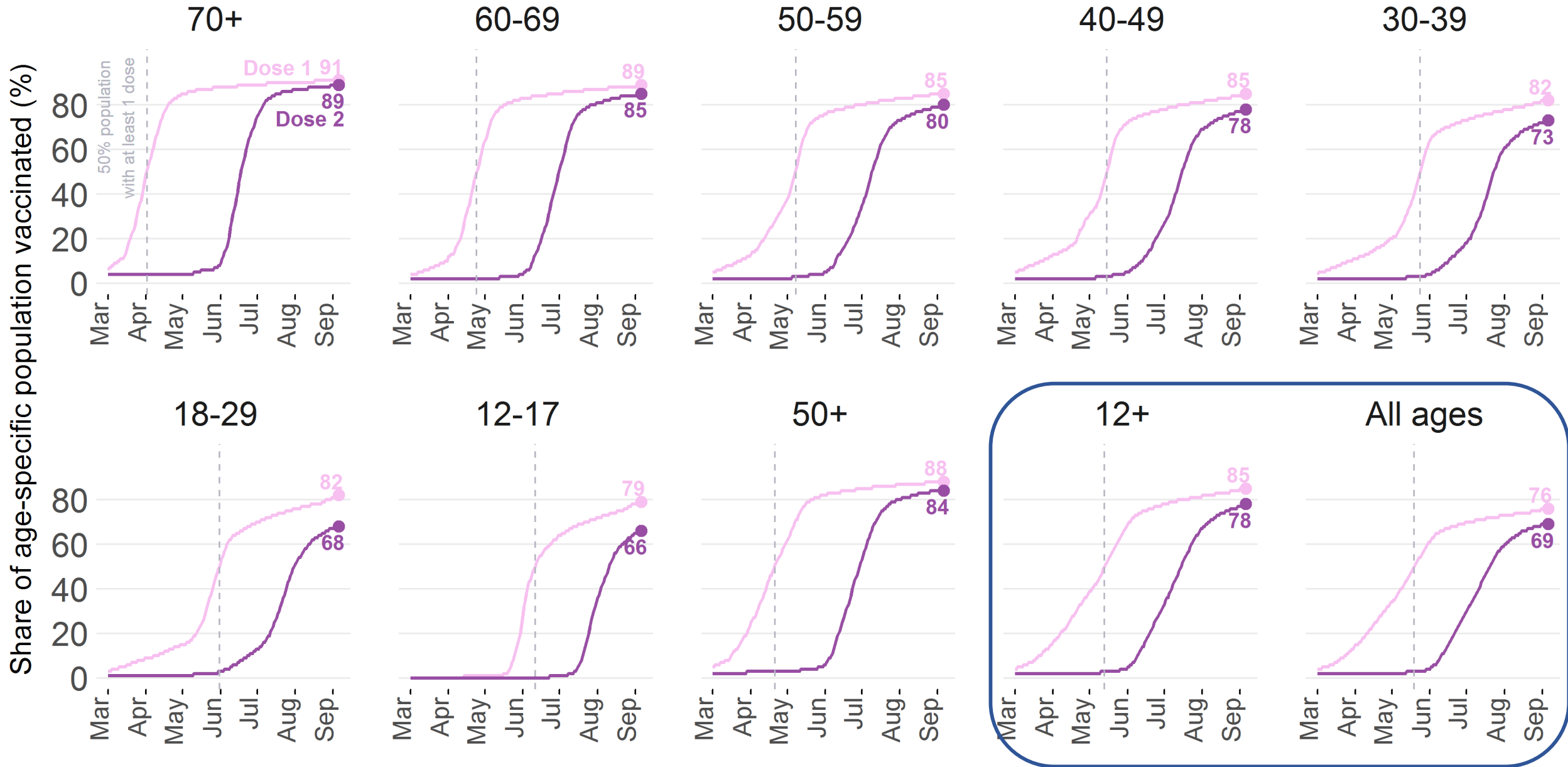


# New daily rates per 100K population (7-day moving average)

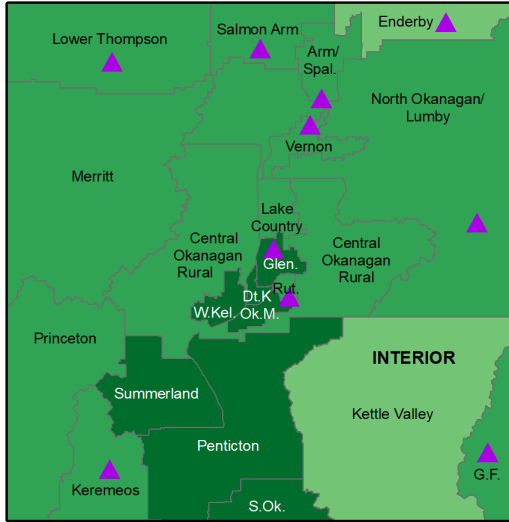


Data up to 2021-09-09

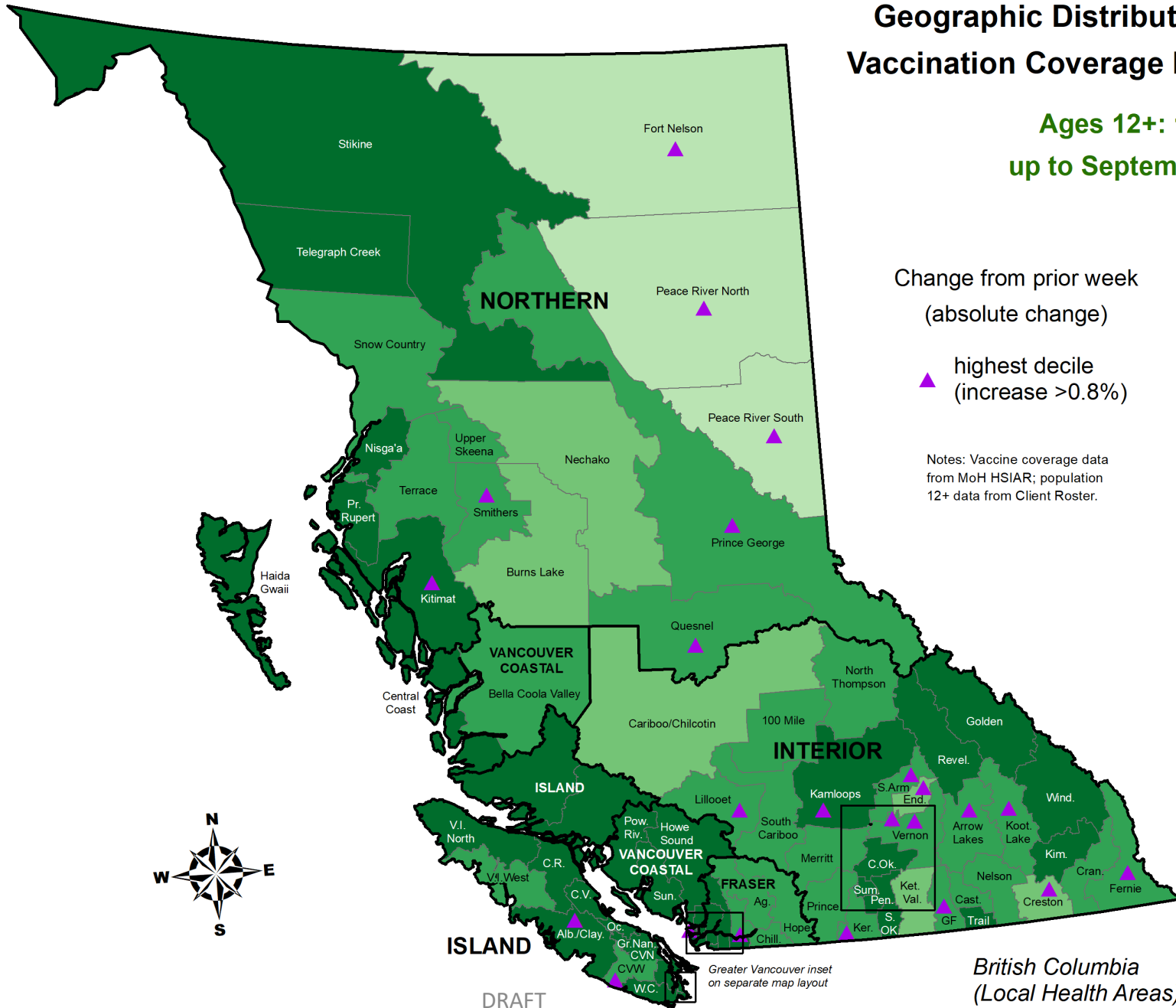
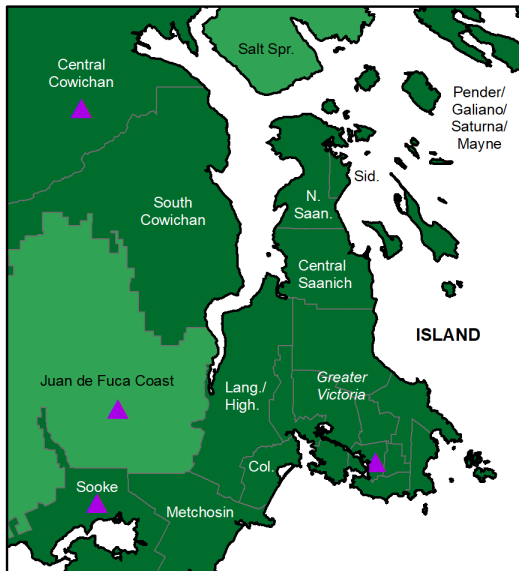
# Vaccination progress in BC as of Sept 7<sup>th</sup>, by age group and dose number



Okanagan Inset  
(Community Health Service Areas)



Greater Victoria Inset  
(Community Health Service Areas)



# Geographic Distribution of COVID-19 Vaccination Coverage by LHA and CHSA

**Ages 12+: 1st Dose  
up to September 6, 2021**

Change from prior week  
(absolute change)

▲ highest decile  
(increase >0.8%)

Notes: Vaccine coverage data from MoH HSIAR; population 12+ data from Client Roster.

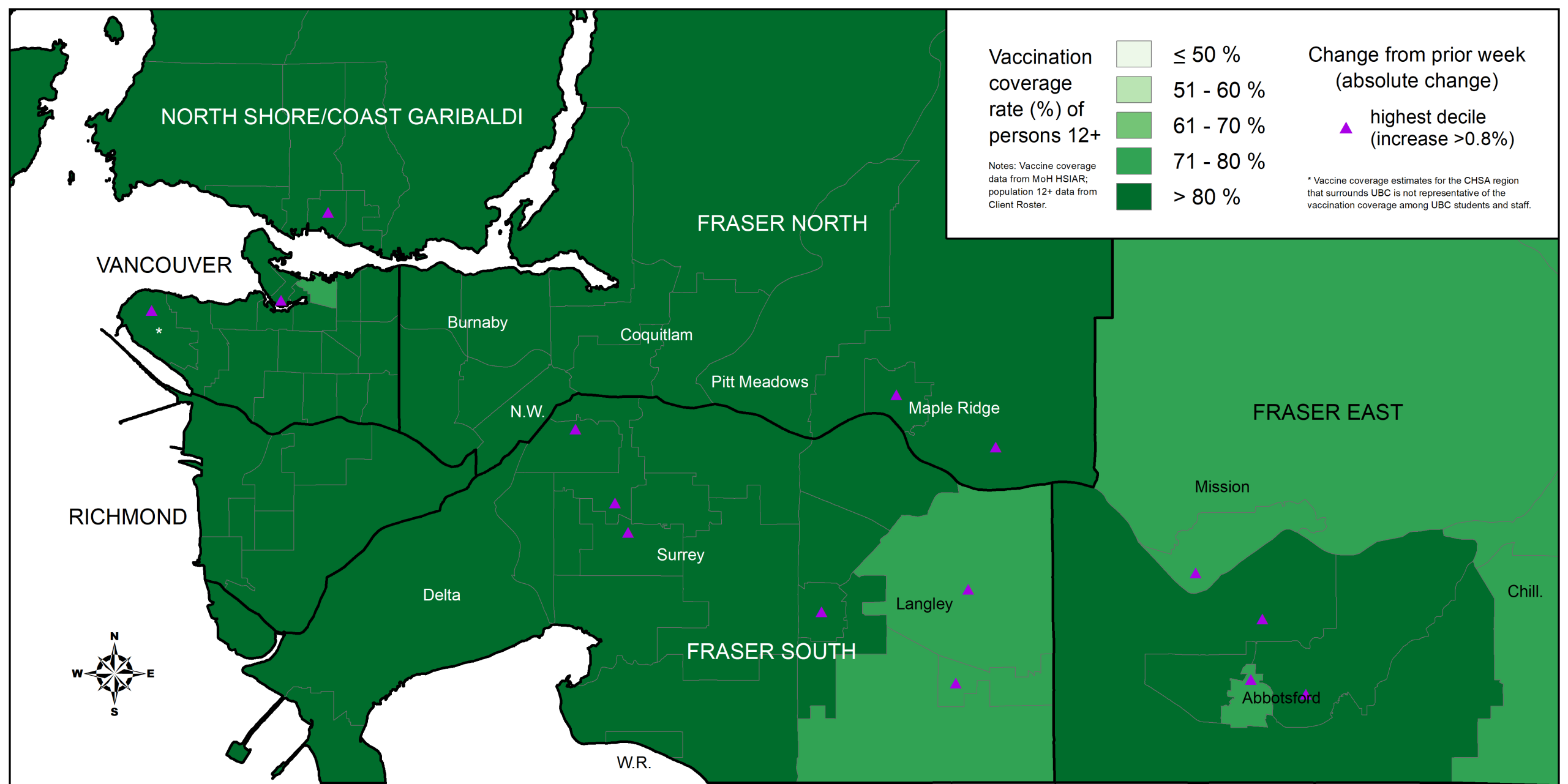
Vaccination coverage rate (%) of persons 12+

- ≤ 50 %
- 51 - 60 %
- 61 - 70 %
- 71 - 80 %
- > 80 %

DRAFT

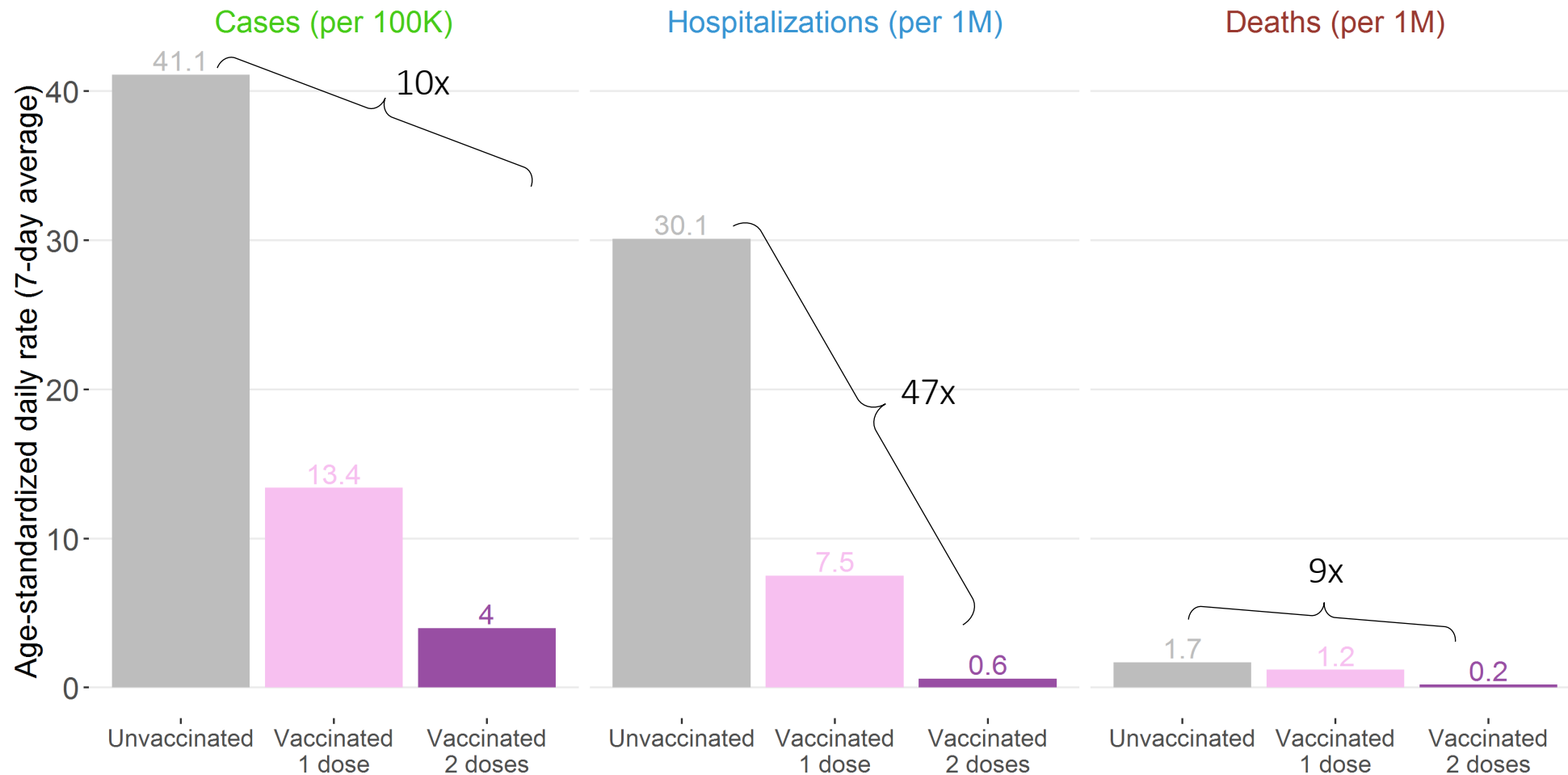
Greater Vancouver inset on separate map layout

British Columbia  
(Local Health Areas)



COVID-19 Vaccination Coverage by CHSA: Ages 12+ 1st Dose (up to September 6, 2021)

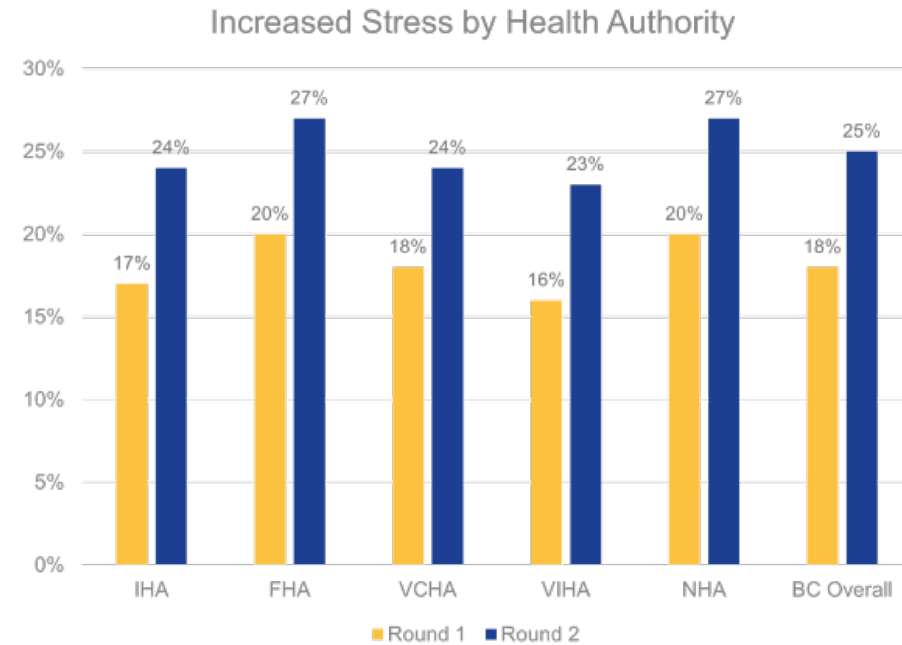
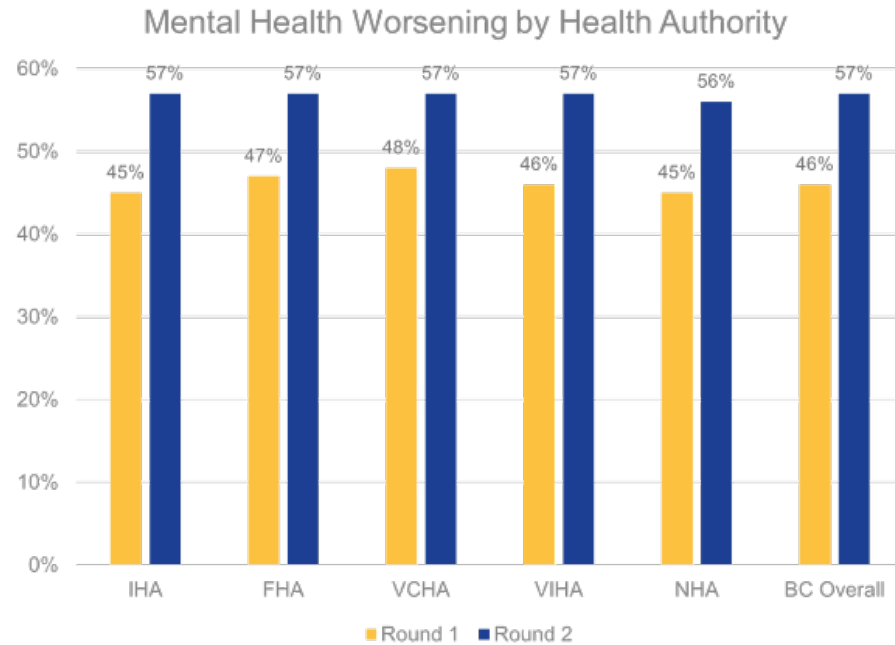
After adjusting for age, unvaccinated individuals continue to be at a significantly higher risk of infection, hospitalization, and death from COVID-19 compared with fully vaccinated



Data include cases from Aug 31-Sep 06, and hospitalizations and deaths from Aug 28-Sep 03, 2021

DRAFT

# Mental health & stress by health authority - differences in cross-sectional estimates from R1 & R2



- People reporting **mental health worsening** is similar across all health authorities for both R1 & R2 but increased between R1 & R2
- People reporting **increased stress** increased between R1 & R2 across all health authorities, a larger proportion are in the Fraser & Northern health regions

# Impact of Covid-19 on our population

- Mental health impacted the most and there is significant deterioration in protective resiliency factors.
- Families with children have been struggling and impacts of pandemic on well-being and impaired development will need to be monitored.
- Young adults (18-29 years) still experiencing significant disruption to post-secondary education, employment opportunities, financial insecurity & life goals.
- Access difficulties and avoidance of healthcare will contribute to increased demand from delayed diagnoses and interventions for conditions that existed pre-pandemic; additional burden from pandemic impacts will exacerbate.
- Many opportunities are inequitably distributed, and the pandemic has widened the gap.



**Masks  
mandatory  
in indoor  
public  
spaces**

**COVID-19** IN BC



# Mandatory vaccinations for long-term care and seniors' assisted living workers



COVID-19 IN BC

# BC Vaccine Card



# COVID-19 vaccine trials in children

Age group	Pfizer/BioNTech	Moderna	Oxford/Astra Zeneca	Janssen	Novavax
12-17 years	Approved and in use in Canada	Approved and in use in Canada	Recruitment ongoing	Recruitment ongoing	Recruitment ongoing
6-11 years	Recruitment ongoing	Recruitment ongoing		Study planned	No plans stated
6 months – 5 years	USA/Europe Data 2021 Q4?	USA/Canada Data 2022 Q1?	No plans stated		
<6 months	No plans stated	No plans stated	Some protection expected from immunization in pregnancy		